



SHIV SHAKTI GROUP

India's Leading Multimodal Surface

We offer a Global Logistics, Transportation, Infrastructure & Construction Network with our worldwide offices and also high quality distribution facilities which are staffed by dedicated teams of the top of experts. We have more than 30 years of experiences in this field.

www.shivshaktiscpl.com



COMPANY

In the sphere of logistics, transportation , Infrastructure & Construction , Shiv Shakti Group is one of the fastest-growing and renowned company which has pioneered in providing a secure and reliable delivery & Infra network in the field of logistic , Infra & Construction services in India. As a supply chain, logistics, Infra & Construction service provider, we offer a Pan-India operation network to a wide range of customer.

Across the country, our eminent customer operates in variegated sectors including fashion and apparel, retail, food and beverages, electronics and technologies, automotive and engineering, Coal Mining, Road,home and furniture.

With the continuous support of our extensive workforce, capacious infrastructure and a highly-equipped modern fleet of vehicles of all types, Shiv Shakti has a wide reach to cater to services in all areas. Through our customer-centric approach and multi-specialist transportation & Infrastructure system.

We at Shiv Shakti are dedicated to fulfilling the needs and aspirations of the customers with efficiency in every situation. We operate through a network of several head and branch offices to cater our valuable customers and we are now heading to expand our service's reach in the remotest locations of the country.

Our ability to complete challenges, Moving towards success by being committed to customers and performing duties over time regardless of geography makes us "Velocity towards Victory"

Mission

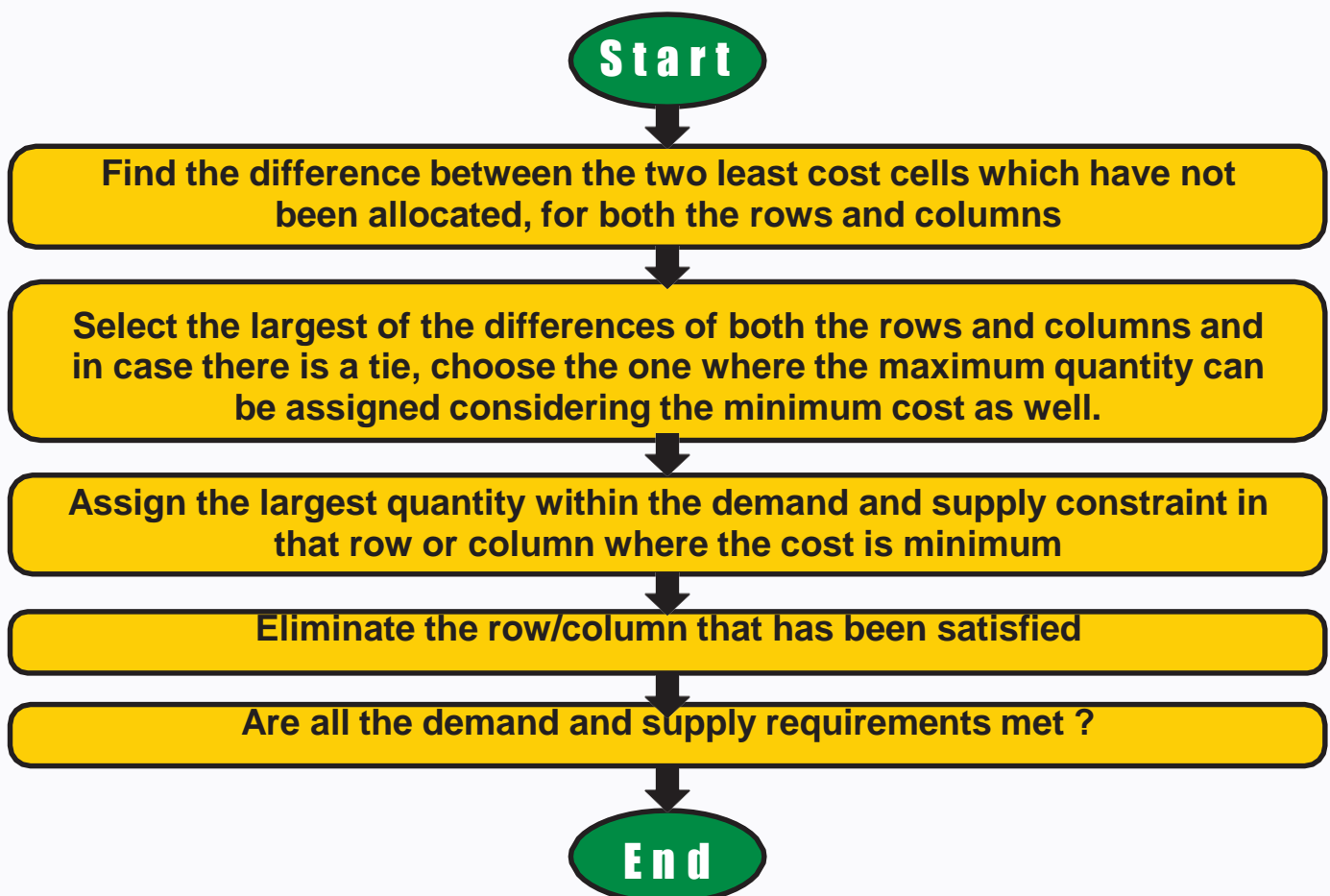
Our mission is to hearten our workforce to perpetually strive for quality and excellence in every services that we cater to our precious clients along with cost-efficiency and maintaining delivery deadlines.

Vision

Our goal is to increase our capabilities even more so that we can be known as India's premier company in business that enrich lives and contribute towards nation through loyalty and commitment.

Our Expertise

1. Milk Run Planning
2. Minimising Transportation problems by using Northwest cell method, MODI, Least cost and by using VAM.
3. Transportation consultant
4. Lease vehicle (On monthly basis)
5. Transportation optimization according to client need
6. Tracking capabilities (GEO Fencing & GPS)
7. Daily Collection
8. 3PL(Third Party Logistics)
9. Warehouse planning
10. Just in time(Line feeding etc.)
11. Transportation Solutions
12. Green Solutions(We analysis the need of the



Tracking & MIS

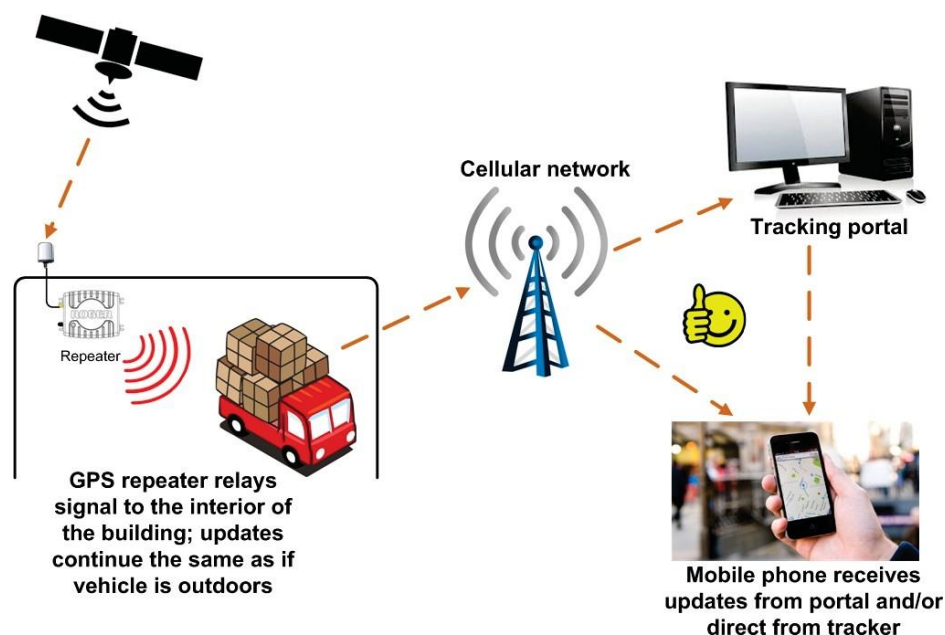
Tracking – We believe in the flow of information for that we have 24x7 customer support service you can call any time and can ask about your vehicle status or you can just drop an sms and our representative call you back with in 20 mins. Also our all vehicles are GPS enabled.

MIS –(Management Information system) We provide MIS of the every consignment sharp at 11 AM in the morning by the all days (7 Days working). MIS is further divided into three types as below:-

A-Daily MIS

B-Forthnight MIS (Include the data of last 15 Days+TAT Compliances)

C-Monthly MIS (Include the data of whole Month, TAT



services

Logisco handles your parcel delivery with the professionalism



Flat Bed Trrailer



Project and Heavy Haul (PHH)



**Tipper Segment for Heavy Load , Coal
Infra Application**



Less Than Truck Load (LTL) / Small

SHIVSHAKTISCPL freight is your partner in moving small (up to 1 ton)/LTL (above 1 ton) quantity freight shipments across the country. Our company hubs consolidate and move your cargo speedily to its designated destination.

Value Added Services

- Modernized and Latest Equipped Hubs
- Multiple Deliveries from Single Location
- Standardized Billing and Rate Structure
- Containerized Movement for High Value Cargo
- LTL on Delivery (COD) Facility
- LTL Consolidation Capacity
- Warehousing & Storage Facility

Why choose Shiv Shakti SCPL for your LTL services?

- Our extensive branch network ensures deliveries across every district in the country
- Track and trace facility is available for the cargo through our extensive computerized network
- We offer competitive rates and exemplary customer service
- Our timely deliveries help you prioritize your time and budgets

Project and Heavy Haul (PHH)

SHIVSHAKTISCPL Freight is fully equipped to handle Bulk/FTL movement from anywhere in India and its neighboring countries. Our network of company owned offices across India makes us closest to any source of raw material or any plant or any customer in the country.



Value Added Services

Assembling and Disassembling of cargo for delivery
Heavy vehicles, closed-body containerized trucks for over-sized shipment
Customized plan based on your consignment size
Site survey and feasibility studies

Why choose Shiv Shakti SCPL for your PHH services?

We ensure our clients a great amount of flexibility and cost effective transports solutions
Our GPS enabled trucks ensure that your shipments are monitored and you get online track and trace
We have a team of dedicated expert drivers and professionals
The transit times that we deliver your cargo in, allows you to plan your business with ease



Full Truck Load (FTL)

SHIVSHAKTISCPL Freight is fully equipped to handle Bulk/FTL movement from anywhere in India. Our network of company owned offices across India makes us closest to any source of raw material or any plant or any customer in the country.

Value Added Services

End to End Multimodal Transportation
Multi Location Delivery & Pick up
Single Point Billing
Own TEU's (Twenty foot equivalent) Containers for Movement of High Value Cargo
Online Track and Trace
Key Account Management
Godown & Warehousing Facility

CONSTRUCTION EQUIPMENTS



Excavator



Backhoe Loader



**Tipper & Hiva Segment for Heavy Load,
Coal & Infra Application**

ASSOCIATION WITH-

A. Coal ,Fly Ash Cement & Clinker

THDC- AJ Industries Singrauli

MPPGCL-NKAS Khandwa

MPPGCL-OSL Khandwa

JK Cement- Ujaain, Panna

RCCPL - Maihar

B. E Commerce

Amazon Sellers Service P L

Instakart Service P L

Vibracoustic Noida P L

Godrej & Boyce india L

D Mart -

Jio Mart

C. FMCG & OTHERS

P & G India Ltd. Group

Pantanjali Group

Parle Agro India Ltd.

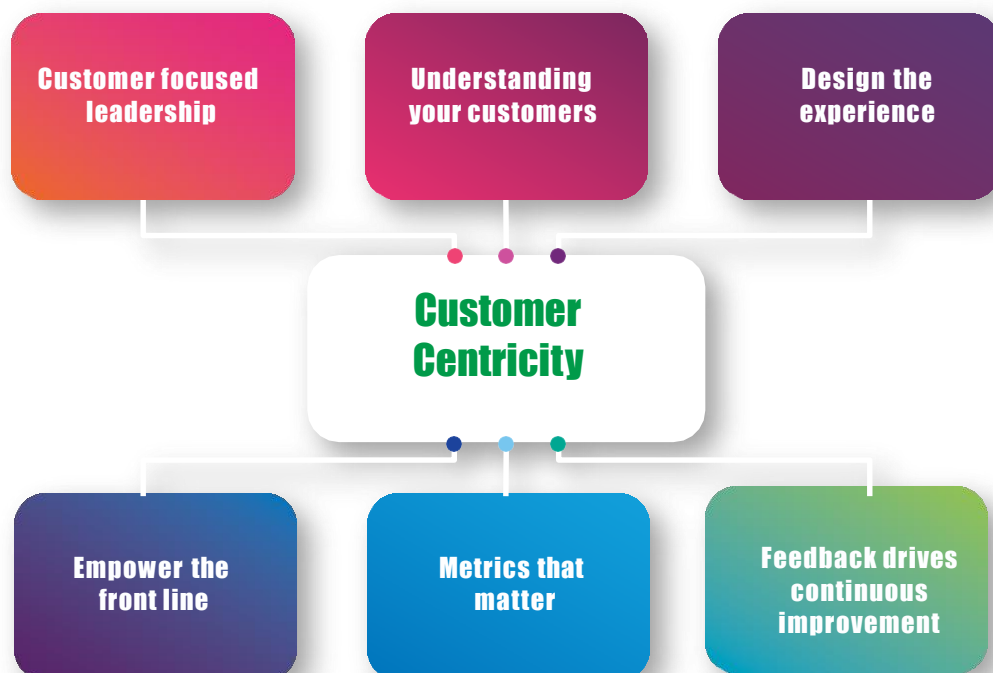
BHEL Bhopal

Why Us

We are Different from other transportation

companies reason being –

1. RCA & Best Possible solutions
2. Customer Centric
3. Vendor Centric
4. Transportation Analysis
5. Real Time updates
6. Fishbone analysis
7. MODI Analysis
8. Northwest Rule method
9. Least cost analysis
10. VAM Analysis
11. MIS (Weekly,Monthly,Yearly)





FLEET

Shiv Shakti SCPL is fully equipped with more than 300 self owned fleet to handle Bulk/FTL movement from anywhere in India. Our network of company owned offices across India makes us closest to any source of raw material or any plant or any customer in the country.

NETWORK

Our network of company owned offices across India makes us closest to any source of raw material or any plant or any customer in the country.

OFFICES

**Bhopal | Indore | Ujjain | Khandwa | Gwalior | Jabalpur | Singrauli |
Nagpur | Lucknow | Patna | NCR-Noida | Hasangarh | Bhiwandi |
Bengaluru | Surat-Hajeera | Ahmedabad | Raipur | Pune | Hyderabad |
Chennai**



Shiv Shakti Supply Chain Pvt. Ltd, 5, First Floor , Radhe Complex, Mandideep
Bypass, Khajuri Kalan, Bhopal (M.P.) 462022



info@shivshaktiscpl.com

www.shivshaktiscpl.com



+91-9329498220